

Overview of MARUI GROUP

As of March 31, 2018

Company Overview

Name	MARUI GROUP CO., LTD.
Head office	3-2, Nakano 4-chome, Nakano-ku, Tokyo 164-8701, Japan
Date of foundation	February 17, 1931
Date of establishment	March 30, 1937
Capital	¥35,920 million
Business activities	Corporate planning and management for Group companies engaged in Retailing segment and FinTech segment
Stores	Marui and Modi: 26 located in Kanto, Tokai, Kansai, and Kyushu regions
Total sales floor area	439,800m ²
Number of employees	5,548 (Group total, excludes temporary employees)
Main banks	The Bank of Tokyo-Mitsubishi UFJ, Ltd. *1 Sumitomo Mitsui Banking Corporation Mitsubishi UFJ Trust and Banking Corporation Mizuho Bank, Ltd. Development Bank of Japan Inc.
Accounting auditor	KPMG AZSA LLC

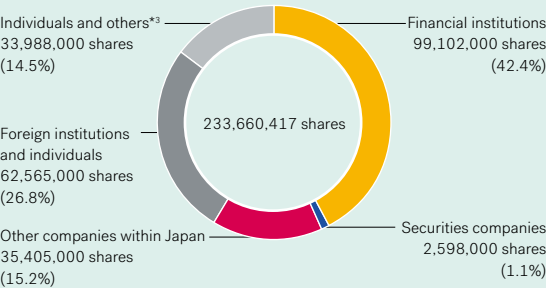
*1 Currently MUFG Bank, Ltd.

Stock Information

Stock listing	Tokyo Stock Exchange, First Section (loan margin trading issues)
Securities code	8252
Number of authorized shares	1,400,000,000
Number of common shares issued*2	233,660,417
Number of shareholders	24,080

*2 Number of common shares issued includes 12,767,206 shares of treasury stock, equivalent to 5.5% of the total number of shares of common stock issued.

Distribution of Shares Held by Shareholder Type



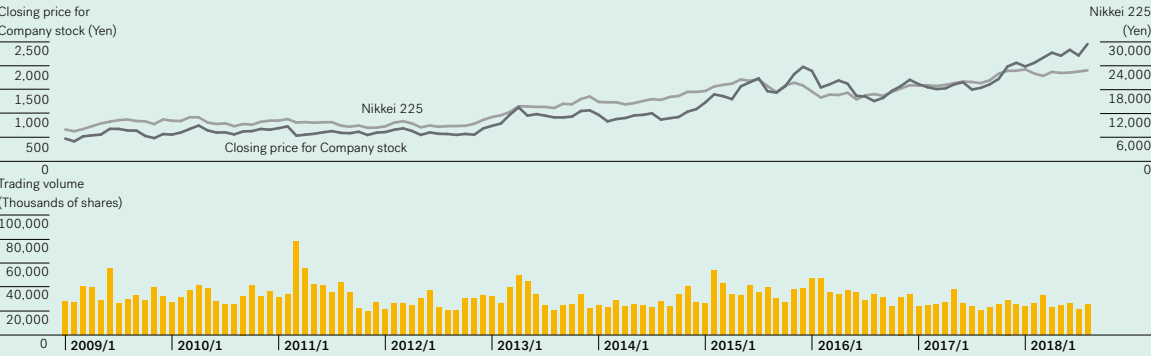
*3 Individuals and others includes 12,767,206 shares of treasury stock.

Major Shareholders

Name	Number of shares (Thousands of shares)	Percentage of total shares issued** (%)
The Master Trust Bank of Japan, Ltd. (Trust Account)	31,735	14.4
Japan Trustee Services Bank, Ltd. (Trust Account)	17,242	7.8
Japan Trustee Services Bank, Ltd. (Trust Account 9)	6,220	2.8
Aoi Real Estate Co., Ltd.	6,019	2.7
The Bank of Tokyo-Mitsubishi UFJ, Ltd.*1	5,808	2.6
UBS AG LONDON A/C IPB SEGREGATED CLIENT ACCOUNT	4,171	1.9
TOHO CO., LTD.	3,779	1.7
Trust & Custody Services Bank, Ltd. (Securities Investment Trust Account)	3,770	1.7
Japan Trustee Services Bank, Ltd. (Trust Account 5)	3,603	1.6
STATE STREET BANK WEST CLIENT – TREATY 505234	3,529	1.6

*4 Percentage of total shares issued is calculated excluding treasury stock and including 502,300 shares held under the Board Incentive Plan Trust scheme and the Employee Stock Ownership Plan Trust scheme.

Stock Price



MARUI GROUP's Business

MARUI CO., LTD.
Marui store business operation, original sales and private brand operation and development, online shopping and mail-order, outside specialty store business
3-2, Nakano 4-chome, Nakano-ku, Tokyo 164-8701, Japan Tel: 03-3384-0101 (Receptionist)
www.0101.co.jp.e.ex.hp.transer.com

Epos Card Co., Ltd.
Credit card business, credit loan business
3-2, Nakano 4-chome, Nakano-ku, Tokyo 164-8701, Japan Tel: 03-4574-0101 (Receptionist)
www.eposcard.co.jp (Japanese only)

AIM CREATE CO., LTD.
Commercial facility proposal, design and interior decoration, operation and management, operation of Modi stores, advertisement planning and creation
34-28, Nakano 3-chome, Nakano-ku, Tokyo 164-0001, Japan Tel: 03-5340-0101 (Receptionist)
www.aim-create.co.jp (Japanese only)

MOVING CO., LTD.
Trucking business, forwarding, and other businesses
5-1, Bijogihigashi 2-chome, Toda-shi, Saitama 335-0032, Japan Tel: 048-233-1000 (Receptionist)
www.moving.co.jp (Japanese only)

M & C SYSTEMS CO., LTD.
Software development, computer operation
3-2, Nakano 4-chome, Nakano-ku, Tokyo 164-8701, Japan Tel: 03-5343-0100 (Receptionist)
www.m-and-c.co.jp (Japanese only)

MARUI FACILITIES Co., Ltd.
Building management service business, security service business
34-28, Nakano 3-chome, Nakano-ku, Tokyo 164-0001, Japan Tel: 03-3229-0101 (Receptionist)
www.marui-facilities.co.jp (Japanese only)

MARUI HOME SERVICE Co., Ltd.
Real estate rental business
34-28, Nakano 3-chome, Nakano-ku, Tokyo 164-0001, Japan Tel: 03-6361-0101 (Receptionist)
www.marui-hs.co.jp (Japanese only)

MRI Co., Ltd.
Collection and management of receivables business, credit check business
34-28, Nakano 3-chome, Nakano-ku, Tokyo 164-0001, Japan Tel: 03-4574-4700 (Receptionist)
www.mri-s.co.jp (Japanese only)

Epos Small Amount and Short Term Insurance Co., Ltd.
Small-amount short-term insurance policy business
34-28, Nakano 3-chome, Nakano-ku, Tokyo 164-0001, Japan Tel: 03-4546-0101 (Receptionist)
www.epos-ssi.co.jp (Japanese only)

tsumiki Securities Co., Ltd.
Sale of investment trusts applicable under Tsumitate NISA through credit payment via EPOS cards
3-2, Nakano 4-chome, Nakano-ku, Tokyo 164-8701, Japan Tel: 03-3384-0101 (Receptionist)
www.tsumiki-sec.com (Japanese only)

MARUI KIT CENTER CO., LTD.
Supply pickup, product inspection, various printing services
Toda Product Center, Second Building, 5-1, Bijogihigashi 2-chome, Toda-shi, Saitama 335-0032, Japan Tel: 048-421-7351 (Receptionist)



Group of new university students supported in the fiscal year ending March 31, 2019

The AOI SCHOLARSHIP FOUNDATION was established by MARUI GROUP founder Chuji Aoi with the aim of contributing to the development of people that can shape the future of Japan and benefit society. Over the more than 40 years since its establishment, this foundation has helped fund the education of high school and university students while facilitating networking between students receiving scholarships and past graduates.

Established: January 1973 (became an incorporated public interest foundation in 2012)
Director: Tadao Aoi (Honorary Chairman of MARUI GROUP)
Total amount of scholarships provided: ¥1,810 million
Total number of students supported: 1,561 (As of April 2018)

Office: 3-2, Nakano 4-chome, Nakano-ku, Tokyo 164-8701, Japan
(located at MARUI GROUP head office)
Tel: 03-5343-0351